



Bucks Fire &
Rescue Service

BFRS Community Safety

September 2022





Bucks Fire &
Rescue Service

Agenda

Part 1 Role of Fire & Rescue Services

Part 2 Prevention or community safety?

Part 3 A new strategy

Part 4 Person Centred Framework

Part 5 Home Fire Safety Visits

Part 6 Who?

Part 7 How to refer



Response

18 fire stations on various crewing models, wholetime, day crewed and on call.

Nationally the number of fires has steadily declined since 2004.



Protection

3 fire safety teams – Aylesbury, Marlow and Milton Keynes

Have responsibility for fire safety in commercial buildings and in the 'common parts' of others such as high-rise, retirement villages etc. that are legislated by the Regulatory Reform (Fire Safety Order)

Address fire safety complaints

Consult on large scale events where a Safety Advisory Group is held

Consult on licensing applications



Prevention

Fire safety advice to people in 'single private dwellings' – houses / flats / including flats within retirement complexes

Engage with the community and partners to reduce risk:

- where a number of deliberate fires in the open have occurred
- to provide reassurance where we have had a significant fire
- to people we are targeting due to age, medical issues or other factors increasing their risk of fire



Prevention or Community Safety?

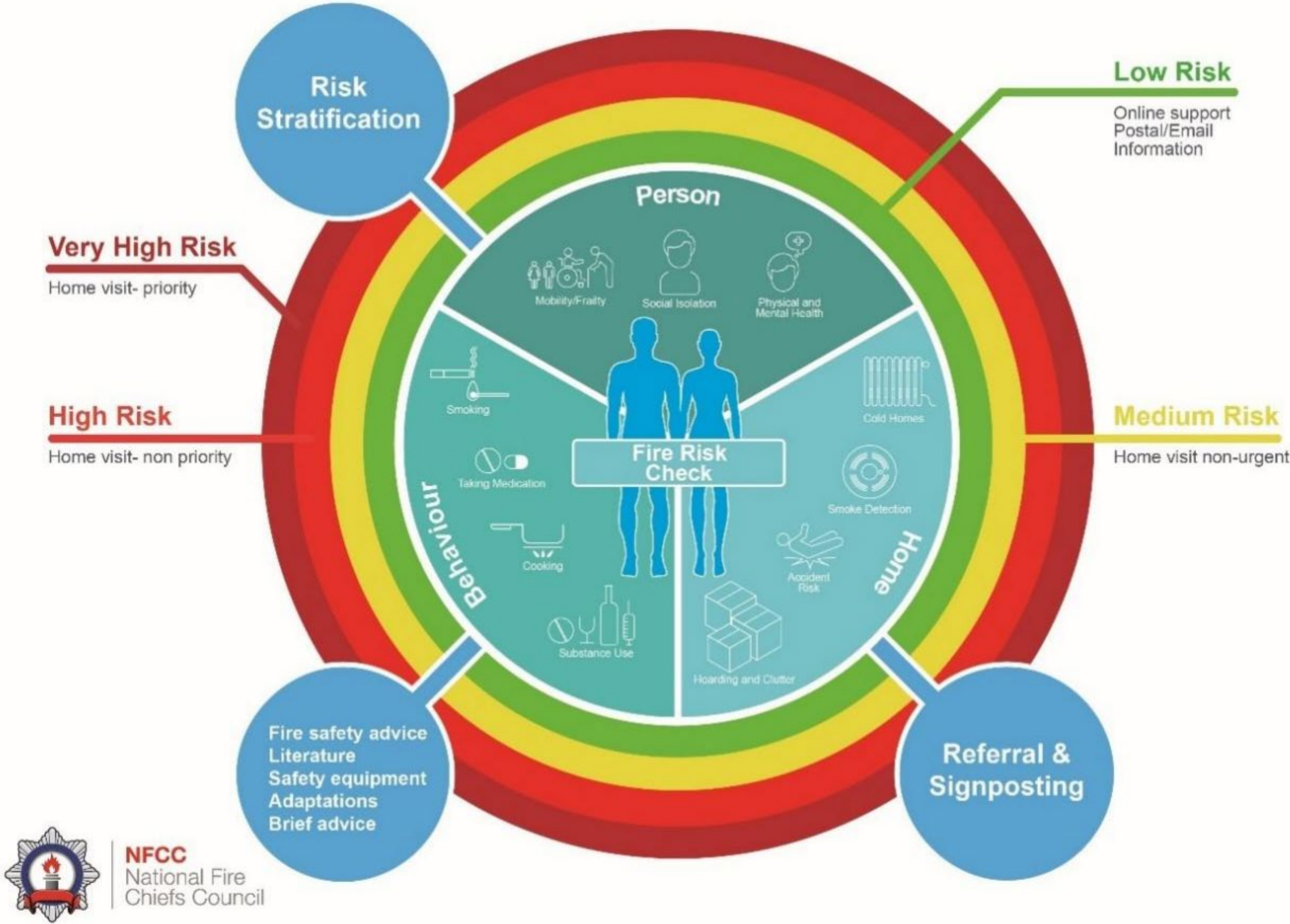
Prevention – global term for the work we do in the Fire & Rescue Service to prevent fires or other incidents from occurring

Community Safety – term used when we work with people and organisations outside of fire because it ties in to their work under the Crime and Disorder Act which brought in:

- Community Safety Partnerships – Safer Bucks and Safer MK
- Community Safety teams
- Community Safety officers



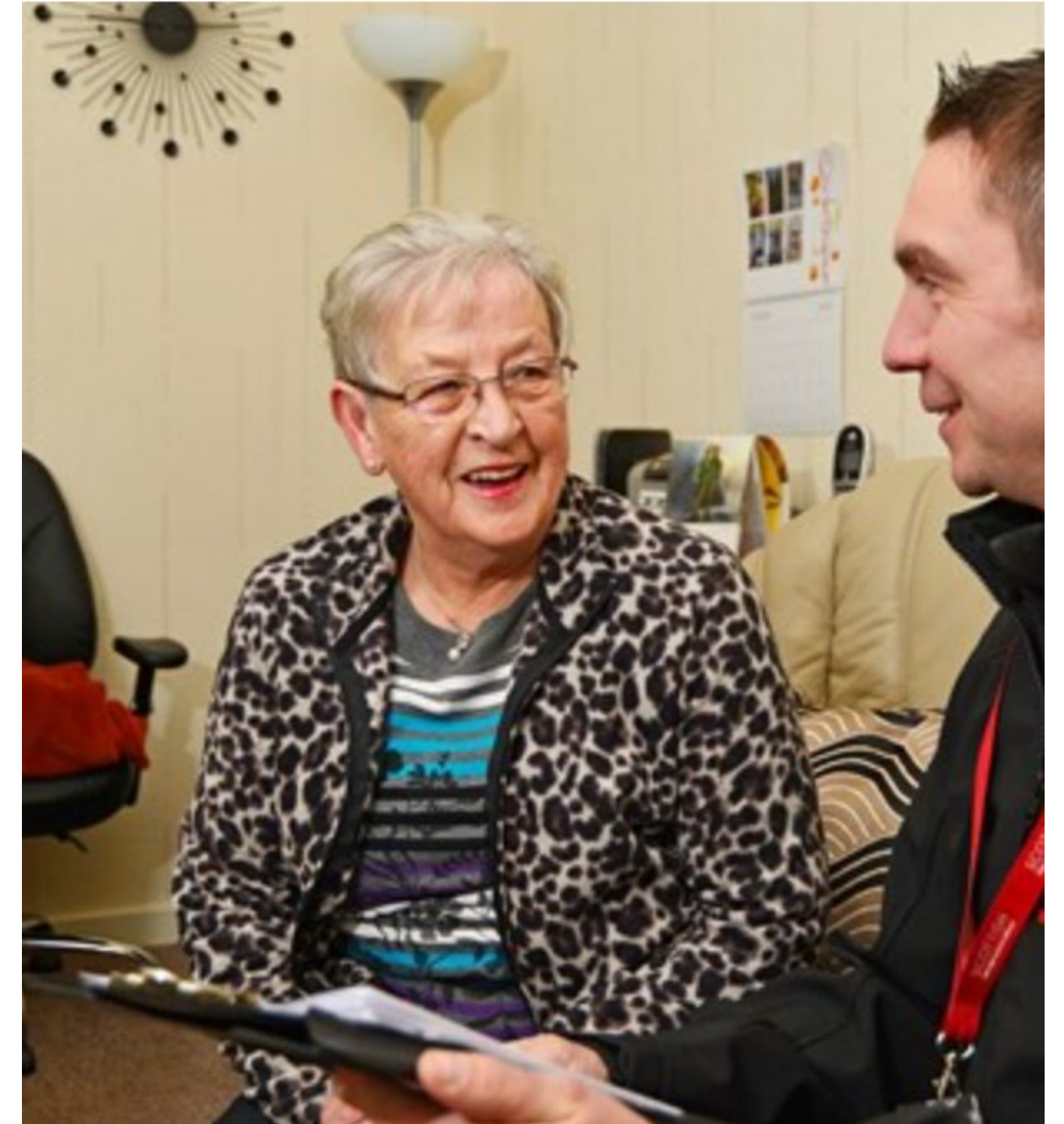
The Person Centred Framework



A Home Fire Safety Visit

Includes:

- Home Fire Detection (smoke and heat) incorporating Assistive Technology
- Fire Safety in the Home (kitchen, candles and escape planning)
- Fires and Heaters (safer heating)
- Clutter and Hoarding
- Arson/Deliberate Fires
- Smoking-Related Fires
- Medicines and Medical Devices
- Electrical Safety

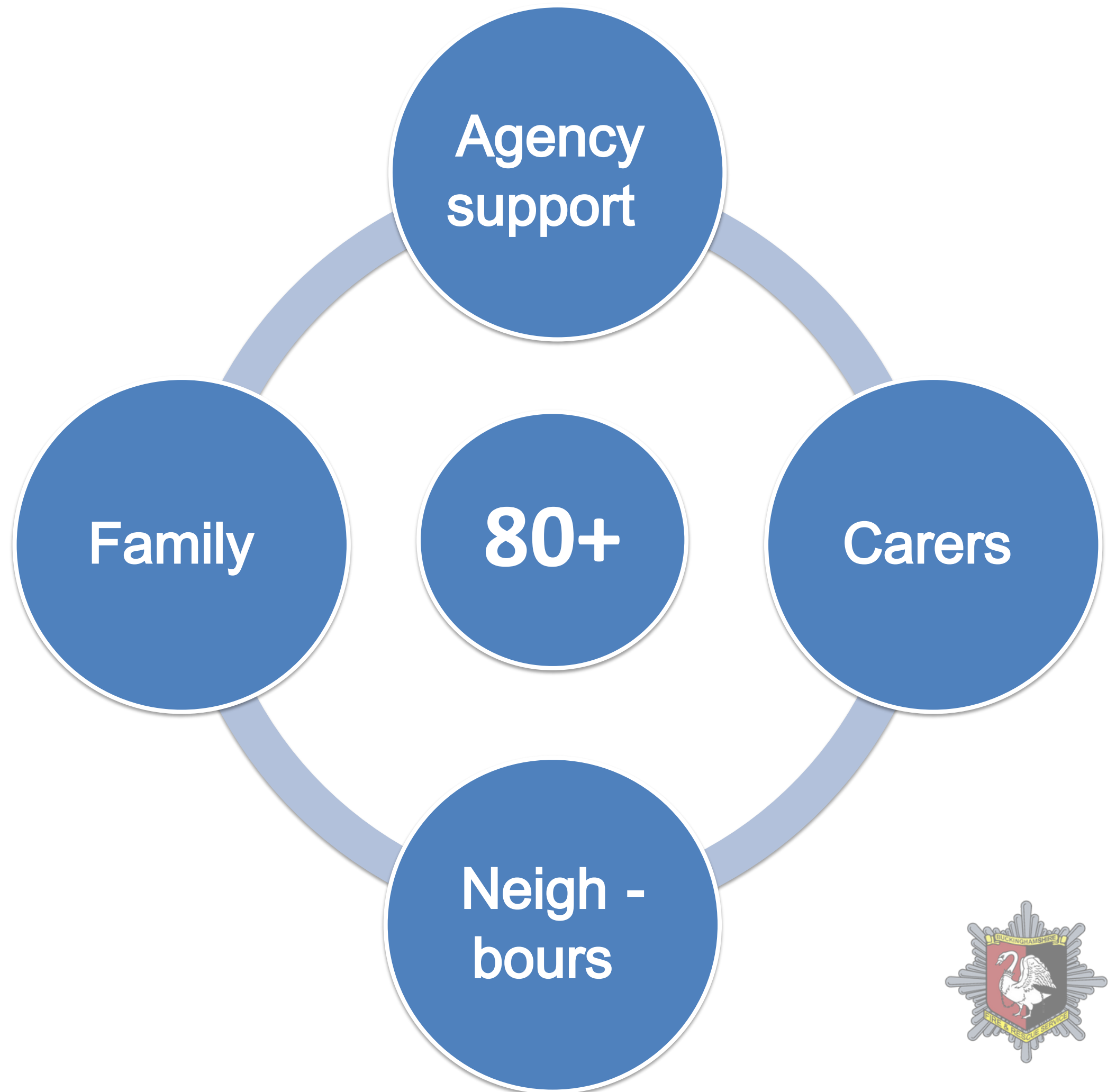


Who do we want to engage with?

Some people are at greater risk from fire due to having a combination of risk factors

We are working on a three -year program to engage with those aged 80 or above

To be most effective we need people's help...



How to refer?

Referral partners

Referral form circulated after the meeting by the Board Co-ordinator

Friends & Family

Phone 01296 744477

Email centraladmin@bucksfire.gov.uk

Online Home Fire Safety Check

Launching November but can be accessed via
www.safelincs.co.uk/hfsc/



Online Home Fire Safety Check

www.safelincs.co.uk/hfsc



NFCC
National Fire
Chiefs Council



Safelincs
Fire & Safety Solutions

Welcome to the online home fire safety check

This easy-to-follow home fire safety check has been developed through a partnership between the National Fire Chiefs Council (NFCC), Fire Kills and Safelincs. It will take you through your home one room at a time and the simple questions will help you spot fire risks as you go around your home.

The tool will offer tips and advice on the steps you can take to reduce those risks. At the end, you will receive a personalised fire safety action plan to help keep you and your household safe from fire.



Fit smoke alarms



**Plan your
escape route**



**Get out, stay out
and call 999**

